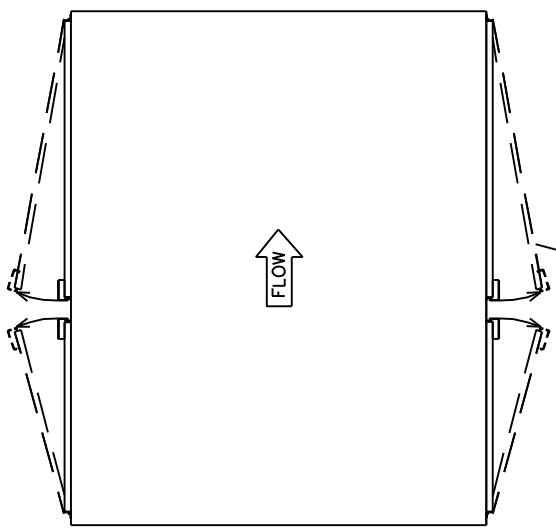
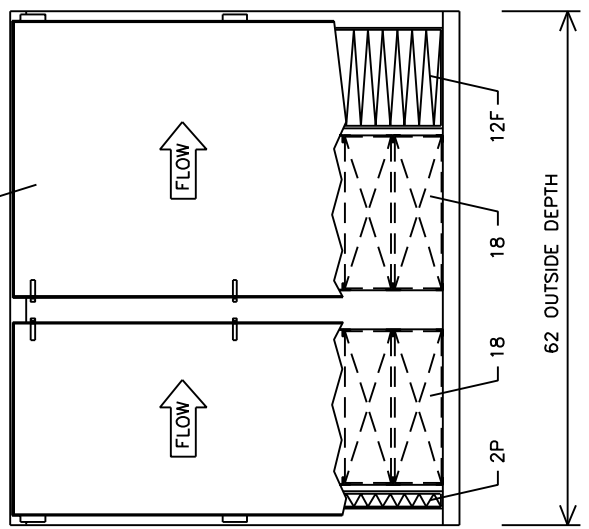


END VIEW FACING OUTLET



HINGED ACCESS DOORS (EACH SIDE)



MODEL NO. SA2H2W-2P-18DP-12F
SA - SIDE ACCESS HOUSING
2H - 2 MODULES HIGH
2W - 2 MODULES WIDE
2P - 2" DEPTH PREFILTERS *
18 - MRM-18 CARBON MODULES
DP - DUAL PASS DESIGN
12F - 12 IN. DEPTH FINAL FILTERS *
* PREFILTERS & FINAL FILTERS SUPPLIED BY OTHERS
APPROX. EMPTY HOUSING WEIGHT - 1130 LBS.
MATERIAL OF CONSTRUCTION: (STANDARD) STITCH WELDED & CAULKED 16 GAUGE COLD ROLLED CARBON STEEL WITH ALUMINIZED FINISH INSIDE & OUT. (OPTIONAL) PAINTED C.S. OR 304/316 STAINLESS STEEL

PROPRIETARY DRAWING			
DRAWING MAY NOT BE USED OR REPRODUCED WITHOUT WRITTEN AUTHORIZATION OF CGL, INC.			
DIMENSIONS ARE FOR REFERENCE ONLY. DO NOT USE FOR CONSTRUCTION UNLESS MARKED "CERTIFIED" BY CGL.			
REV.	DATE	BY	REMARKS
B	06/27/13	JMB	REV. TO 12" FINAL FLTR
A	08/22/05	JMB	ADD 6" FINAL FILTER
--	05/07/01	JMB	ORIGINAL ISSUE

CAMERON GREAT LAKES, INC.
 2336 NW 29th AVE. TEL. 800-777-4044
 PORTLAND, OR 97210 FAX 503-225-0137

DRAWN:	JMB	TITLE: GENERAL ARRANGEMENT MODEL SA2H2W-2P-18DP-12F SIDE ACCESS FILTER HOUSING
CHECKED:	PJL	
APPROVED:	JMB	
SCALE:	N.T.S.	DWG NO. SA2H2W-2P-18DP-12F